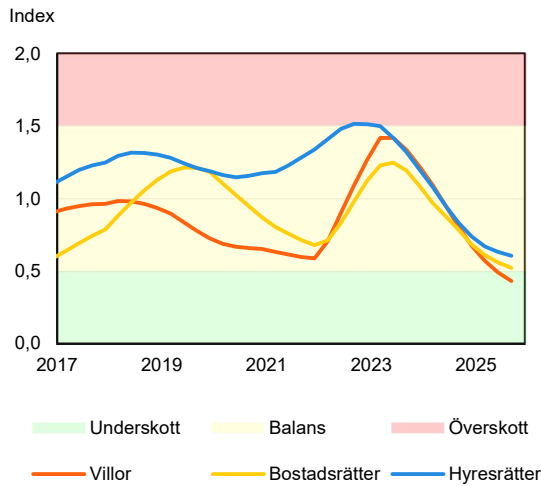


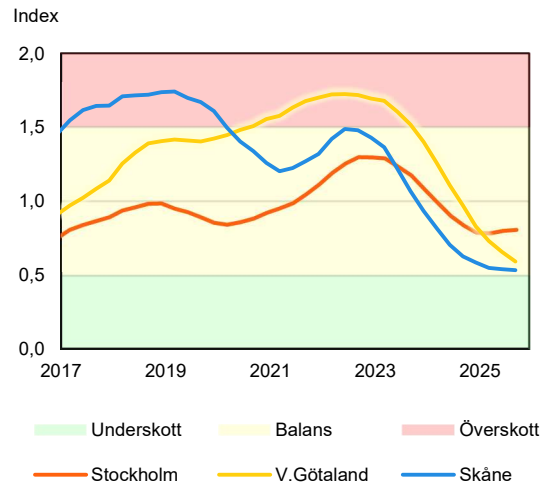
SBAB Booli Housing Market Index (HMI)

Riket och storstadslän

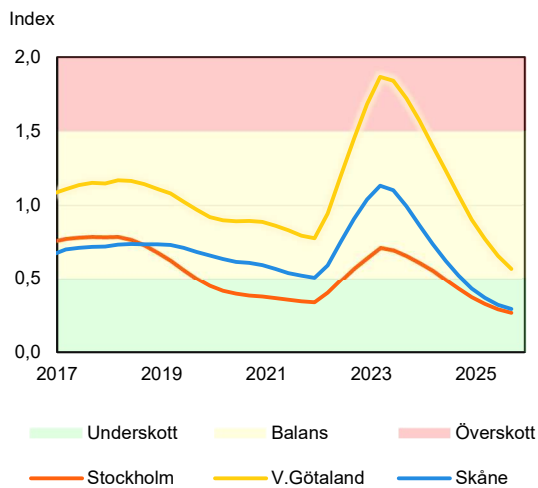
SBAB Booli HMI – Boendeformer, Sverige



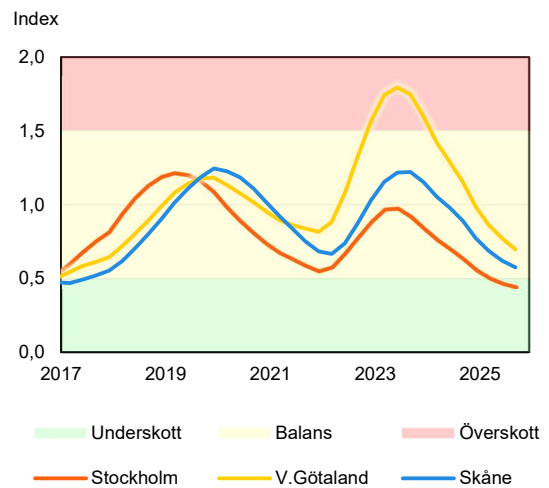
SBAB Booli HMI – Storstadslän, hyresrätter



SBAB Booli HMI – Storstadslän, villor



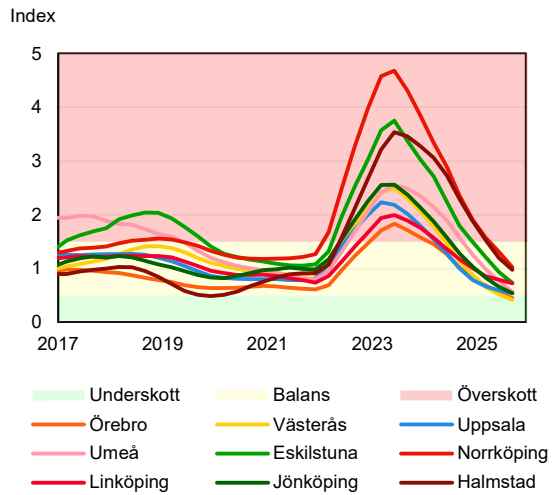
SBAB Booli HMI – Storstadslän, bostadsrätter



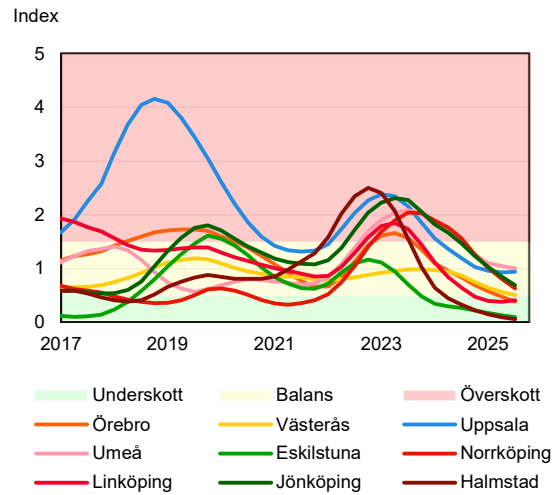
SBAB Booli Housing Market Index (HMI)

Regionstäder

SBAB Booli HMI – Regionstäder, villor



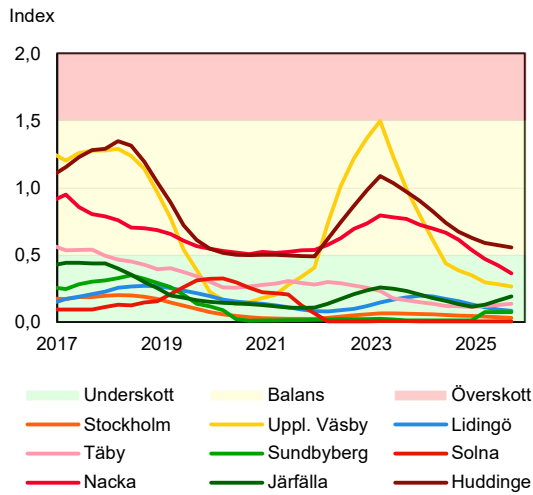
SBAB Booli HMI – Regionstäder, bostadsrätter



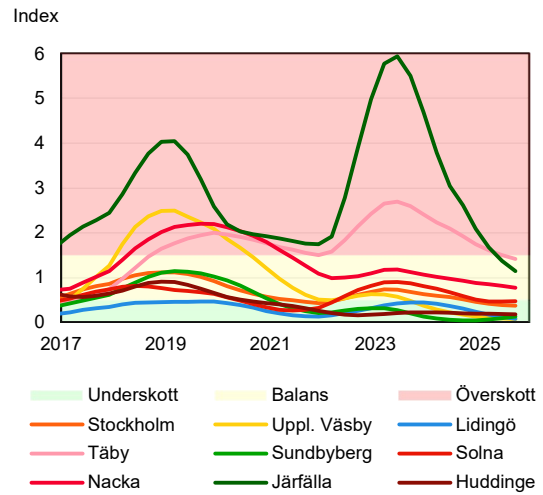
SBAB Booli Housing Market Index (HMI)

Kommuner i Stockholms län

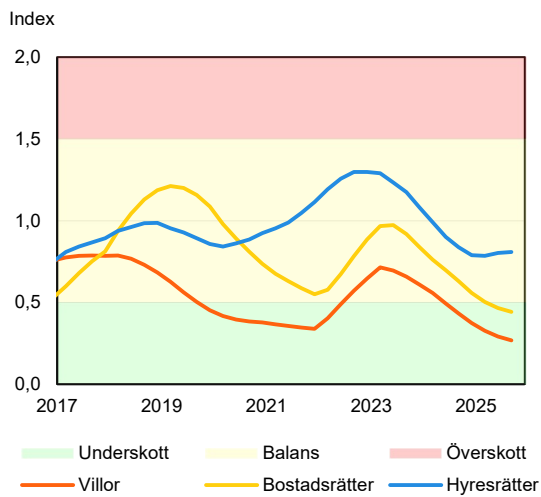
SBAB Booli HMI – Kommuner i Stockholms län, villor



SBAB Booli HMI – Kommuner i Stockholms län, bostadsrätter



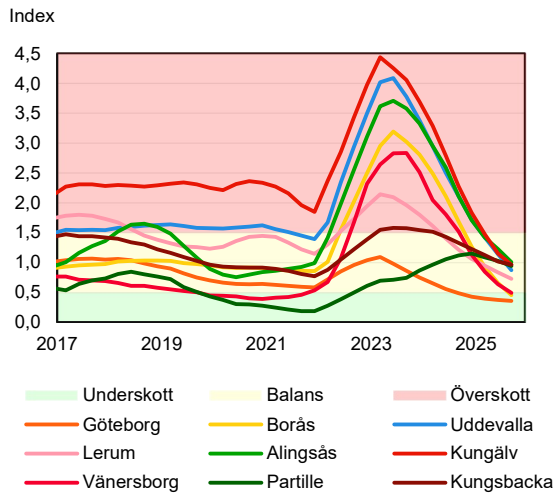
SBAB Booli HMI – Boendeformer, Stockholms län



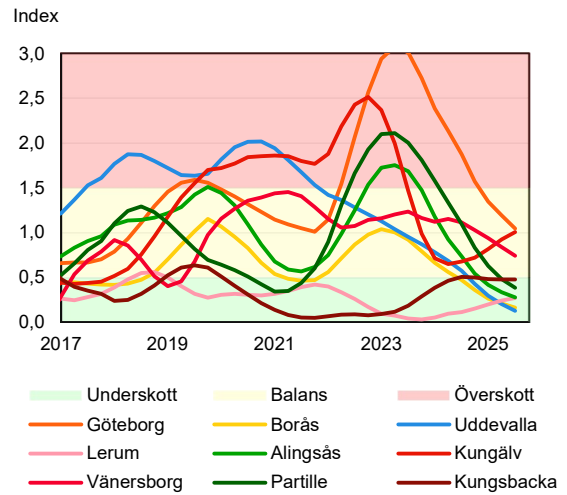
SBAB Booli Housing Market Index (HMI)

Kommuner i Västra Götaland

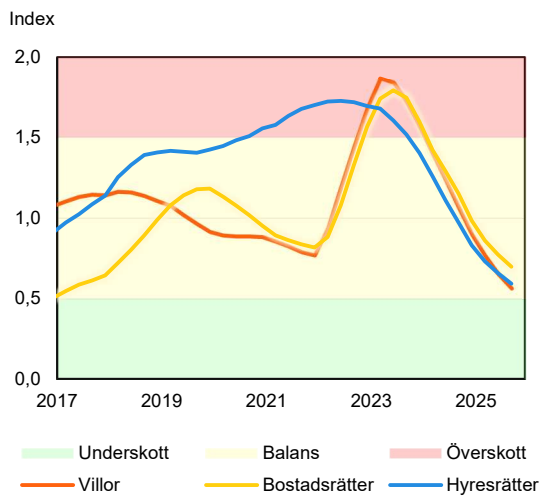
SBAB Booli HMI – Kommuner i Västra Götaland, villor



SBAB Booli HMI – Kommuner i Västra Götaland, bostadsrätter



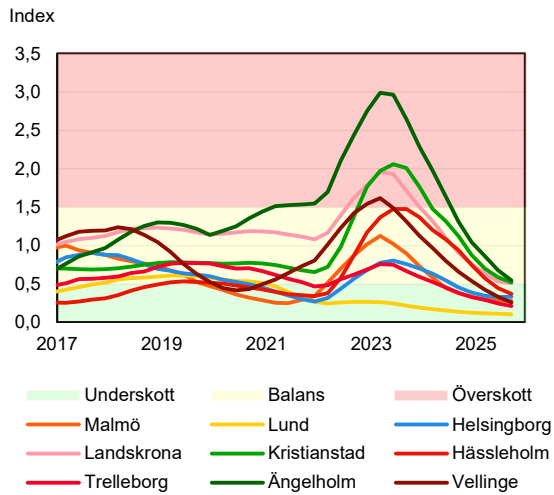
SBAB Booli HMI – Boendeformer, Västra Götaland



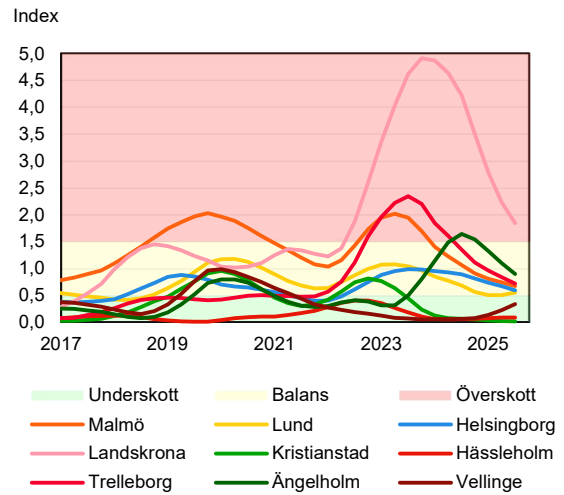
SBAB Booli Housing Market Index (HMI)

Kommuner i Skåne

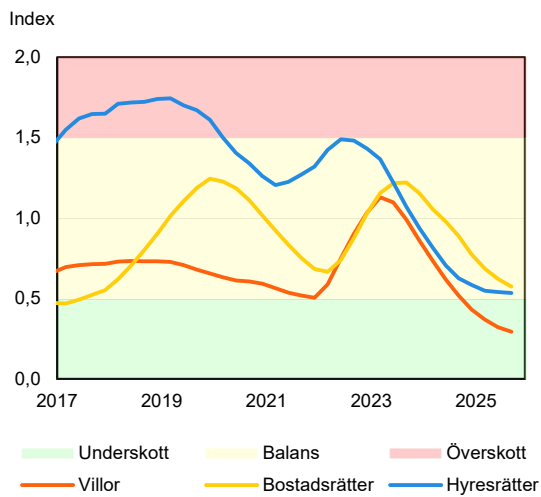
SBAB Booli HMI – Kommuner i Skåne, villor



SBAB Booli HMI – Kommuner i Skåne, bostadsrätter



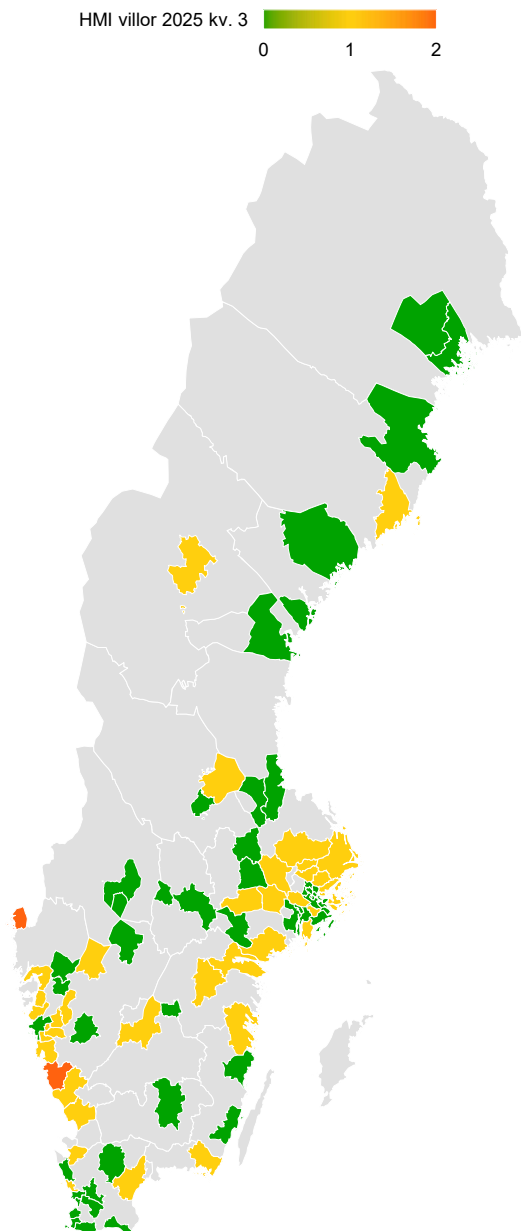
SBAB Booli HMI – Boendeformer, Skåne



HMI i olika kommuner

Beräkningar görs där tillräckliga data finns

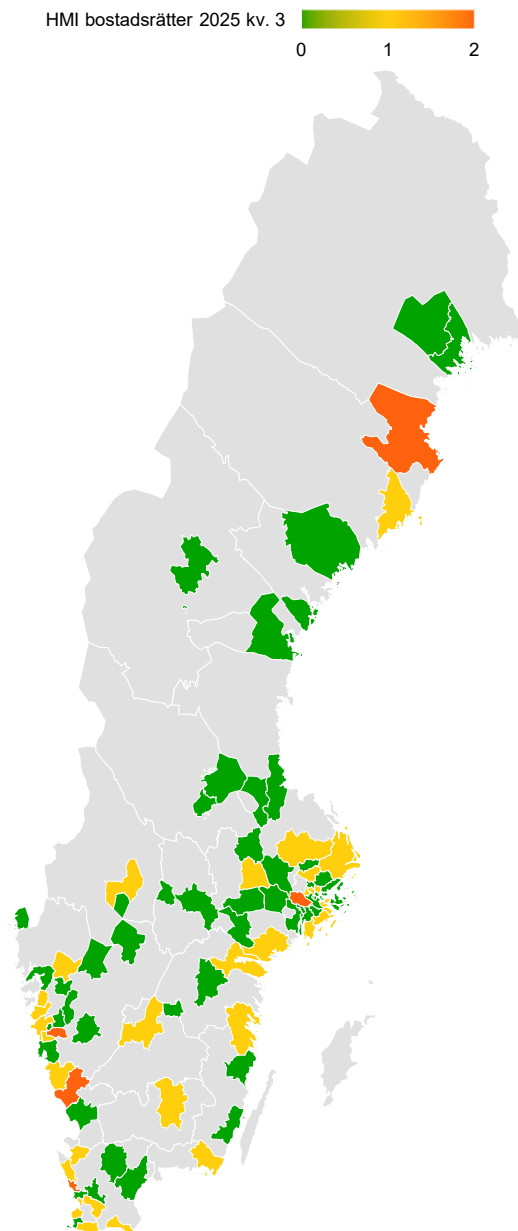
SBAB Booli HMI, villor



Powered by Bing
© Microsoft, Microsoft Crowdsourced Enrichments, OpenStreetMap

Rött = överskott, Gult = balans, Grönt = underskott

SBAB Booli HMI, bostadsrätter



Powered by Bing
© Microsoft, Microsoft Crowdsourced Enrichments, OpenStreetMap

Rött = överskott, Gult = balans, Grönt = underskott